

UKAI Pneumatic Wheels

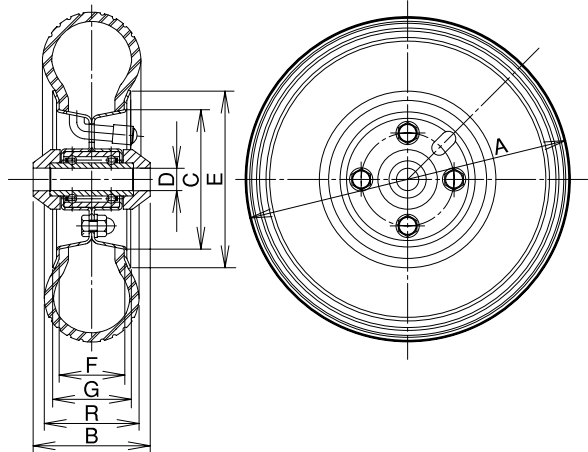
Pneumatic Rubber Wheel / Airless Wheel

6 1/2 x 2-3HL Pneumatic Rubber Wheel



6 1/2 x 2-3HL BLACK

6 1/2 x 2-3HL GRAY



Unit: mm

Model Number	Wheel	Load Capacity		Tire		Rim			Boss Width B	Shaft Diameter D	Standard Air Pressure (kgf/cm ²)	Steel Ball Bearing	Valve	Weight (g)	
		(daN)	(kgf)	Diameter A	Width R	Diameter E	Bead Diameter C	Outside Width G							Inside Width F
6 1/2 x 2-3HL	BLACK	60	61.2	175	51	95	75	42	35	63	12	2.5	1230W	DIN7777	680
	GRAY														680

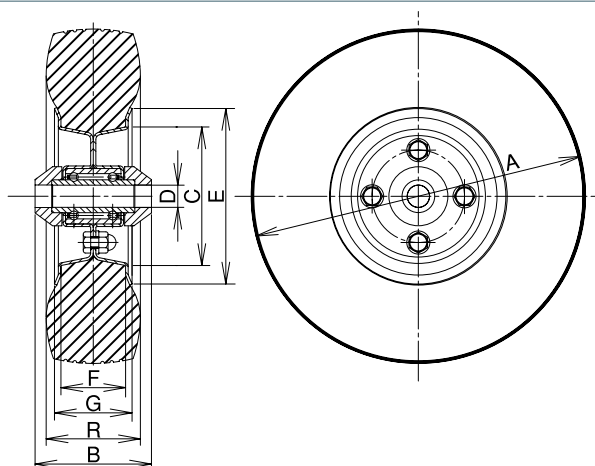
Wheel: BLACK -- Tire Color : BLACK Tire: 4PR
 GRAY -- Tire Color : GRAY

The outer diameter and width of a tire were measured at the standard air pressure under the unloaded condition. They may vary according to usage conditions.

6 1/2 x 2-3HL PU PU Type Airless Tire (Foaming Urethane)



6 1/2 x 2-3HL PU



Unit: mm

Model Number	Wheel	Load Capacity		Tire		Rim			Boss Width B	Shaft Diameter D	Standard Air Pressure (kgf/cm ²)	Steel Ball Bearing	Valve	Weight (g)	
		(daN)	(kgf)	Diameter A	Width R	Diameter E	Bead Diameter C	Outside Width G							Inside Width F
6 1/2 x 2-3HL	PU	60	61.2	181	51	95	75	42	35	63	12	—	1230W	—	830

The outer diameter and width of a tire were measured under the unloaded condition. They may vary according to usage conditions.

Pneumatic Rubber / Airless Wheel Caster Series

Pneumatic Rubber / Airless Wheel

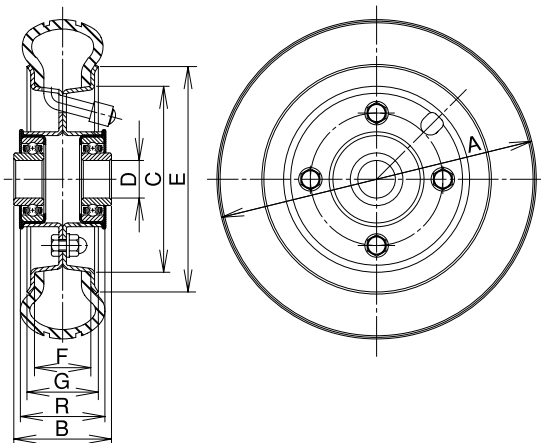
UKAI Pneumatic Wheels

Pneumatic Rubber Wheel / Airless Wheel

6 $\frac{1}{2}$ ×2-4HL (Boss Width : 52) Pneumatic Rubber Wheel



6 $\frac{1}{2}$ ×2-4HL BLACK



Model Number	Wheel	Load Capacity		Tire		Rim				Boss Width B	Shaft Diameter D	Standard Air Pressure (kgf/cm ²)	Steel Ball Bearing	Valve	Weight (g)
		(daN)	(kgf)	Diameter A	Width R	Diameter E	Bead Diameter C	Outside Width G	Inside Width F						
		6 $\frac{1}{2}$ ×2-4HL	BLACK GRAY	80	81.6	175	40	120	99	38	30	52	20	2.5	204B

Unit: mm

Wheel: BLACK -- Tire Color : BLACK
GRAY -- Tire Color : GRAY

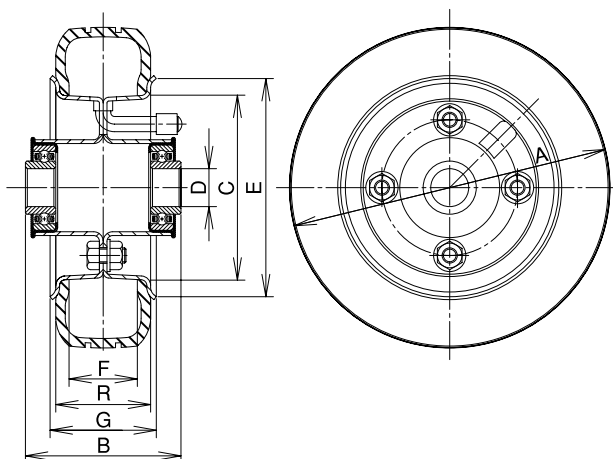
Tire: 4PR

The outer diameter and width of a tire were measured at the standard air pressure under the unloaded condition. They may vary according to usage conditions.

6 $\frac{1}{2}$ ×2-4HF (Boss Width : 82) Pneumatic Rubber Wheel



6 $\frac{1}{2}$ ×2-4HF BLACK



Model Number	Wheel	Load Capacity		Tire		Rim				Boss Width B	Shaft Diameter D	Standard Air Pressure (kgf/cm ²)	Steel Ball Bearing	Valve	Weight (g)
		(daN)	(kgf)	Diameter A	Width R	Diameter E	Bead Diameter C	Outside Width G	Inside Width F						
		6 $\frac{1}{2}$ ×2-4HF	BLACK GRAY	80	81.6	169	50	115	97.5	56	46	82	20	2.5	204B

Unit: mm

Wheel: BLACK -- Tire Color : BLACK
GRAY -- Tire Color : GRAY

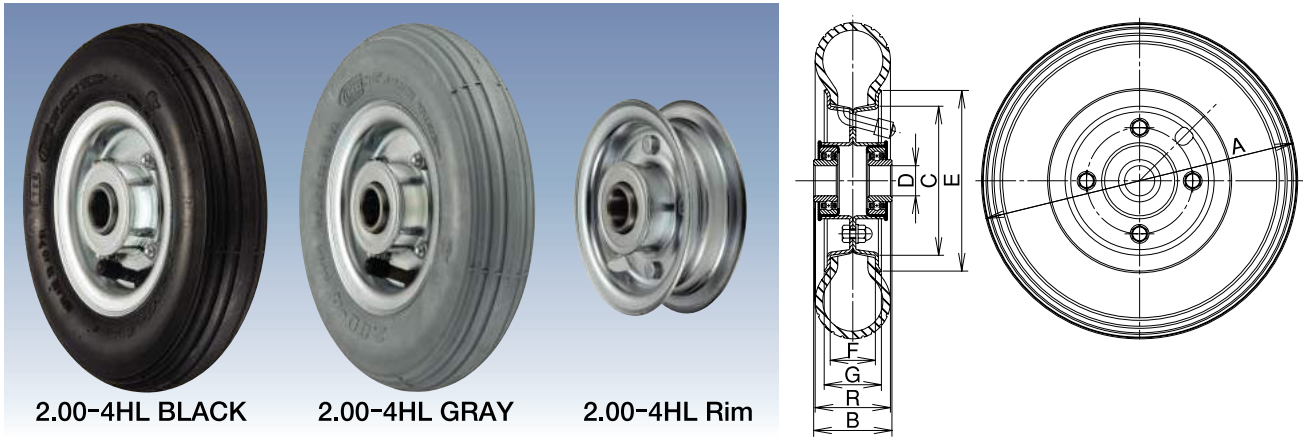
Tire: 4PR

The outer diameter and width of a tire were measured at the standard air pressure under the unloaded condition. They may vary according to usage conditions.

UKAI Pneumatic Wheels

Pneumatic Rubber Wheel / Airless Wheel

2.00-4HL Pneumatic Rubber Wheel



2.00-4HL BLACK

2.00-4HL GRAY

2.00-4HL Rim

Model Number	Wheel	Load Capacity		Tire		Rim				Boss Width B	Shaft Diameter D	Standard Air Pressure (kgf/cm ²)	Steel Ball Bearing	Valve	Weight (g)
		(daN)	(kgf)	Diameter A	Width R	Diameter E	Bead Diameter C	Outside Width G	Inside Width F						
2.00-4HL	BLACK	80	81.6	210	50	120	99	38	30	52	20	2.5	204B	JS87	1,110
	GRAY														

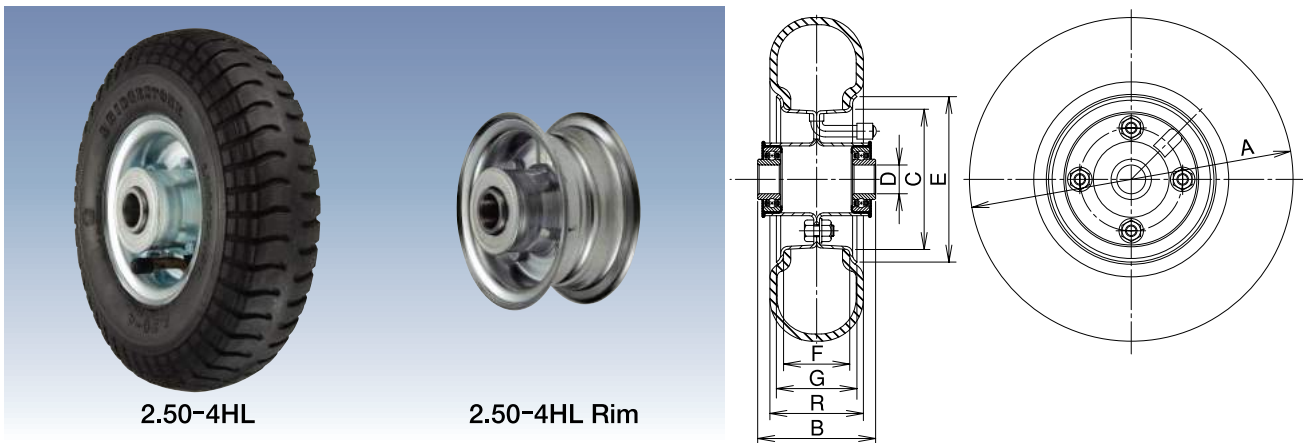
Unit: mm

Wheel: BLACK -- Tire Color : BLACK
GRAY -- Tire Color : GRAY

Tire: 4PR

The outer diameter and width of a tire were measured at the standard air pressure under the unloaded condition. They may vary according to usage conditions.

2.50-4HL Pneumatic Rubber Wheel / Airless Tire



2.50-4HL

2.50-4HL Rim

Model Number	Wheel	Load Capacity		Tire		Rim				Boss Width B	Shaft Diameter D	Standard Air Pressure (kgf/cm ²)	Steel Ball Bearing	Valve	Weight (g)
		(daN)	(kgf)	Diameter A	Width R	Diameter E	Bead Diameter C	Outside Width G	Inside Width F						
2.50-4HL	BS	85	86.7	225	65	115	97.5	56	46	82	20	3.5	204B	TR87	1,550
	FO			218	62										1,460
	AL	100	102.0	220	60										—

Unit: mm

Wheel: BS -- Tire Made by Bridgestone
FO -- Tire Made by an Overseas Maker
AL -- Airless / Solid Tire

Tire: 4PR

The outer diameter and width of a tire were measured at the standard air pressure under the unloaded condition. They may vary according to usage conditions.

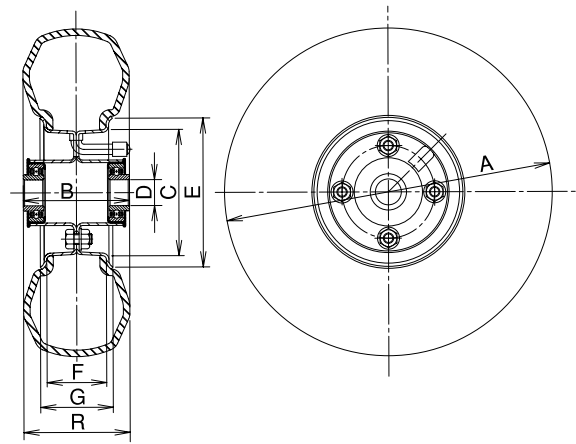
UKAI Pneumatic Wheels

Pneumatic Rubber Wheel / Airless Wheel

3.00-4HL Pneumatic Rubber Wheel / Airless Tire



3.00-4HL



Model Number	Wheel	Load Capacity		Tire		Rim				Boss Width B	Shaft Diameter D	Standard Air Pressure (kgf/cm ²)	Steel Ball Bearing	Valve	Weight (g)
		kg	kgf	A	R	Diameter E	Bead Diameter C	Outside Width G	Inside Width F						
3.00-4HL	BS	110	112.2	253	82	115	97.5	56	46	82	20	3.5	204B	TR87	1,820
	FO			250	76										1,710
	AL	130	132.6	248	73										—

Unit: mm

Wheel: BS -- Tire Made by Bridgestone
FO -- Tire Made by an Overseas Maker
AL -- Airless / Solid Tire

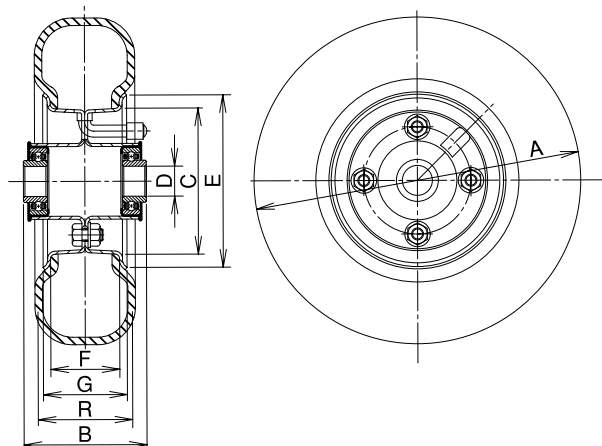
Tire: 4PR

The outer diameter and width of a tire were measured at the standard air pressure under the unloaded condition. They may vary according to usage conditions.

8×3.00-4HL Pneumatic Rubber Wheel / Airless Tire



8×3.00-4HL



Model Number	Wheel	Load Capacity		Tire		Rim				Boss Width B	Shaft Diameter D	Standard Air Pressure (kgf/cm ²)	Steel Ball Bearing	Valve	Weight (g)
		kg	kgf	A	R	Diameter E	Bead Diameter C	Outside Width G	Inside Width F						
8×3.00-4HL	FO	85	86.7	218	67	115	97.5	56	46	82	20	3.5	204B	TR87	1,390
	AL	100	102.0	210	65										—

Unit: mm

Wheel: FO -- Tire Made by an Overseas Maker
AL -- Airless / Solid Tire

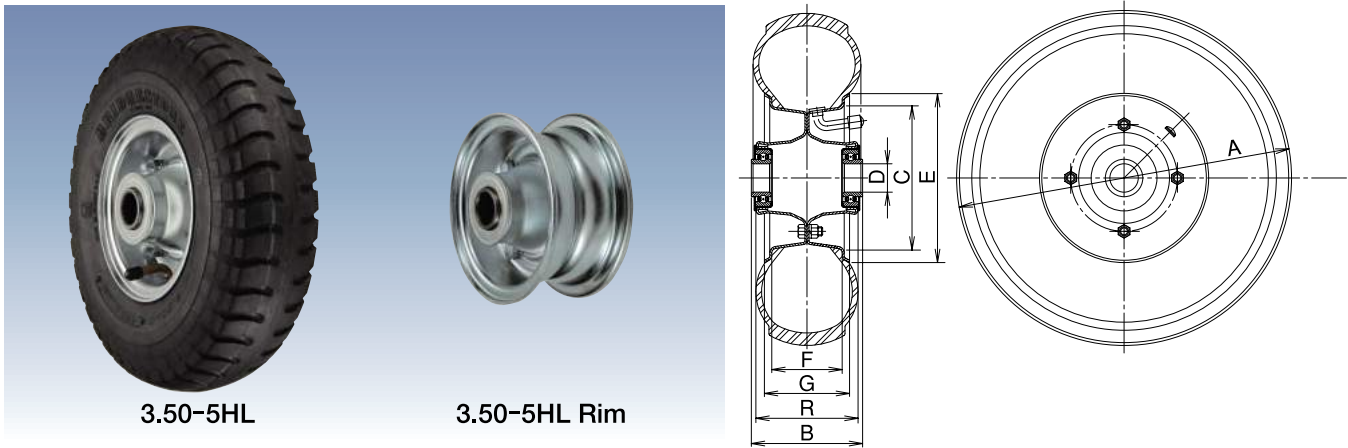
Tire: 4PR

The outer diameter and width of a tire were measured at the standard air pressure under the unloaded condition. They may vary according to usage conditions.

UKAI Pneumatic Wheels

Pneumatic Rubber Wheel / Airless Wheel

3.50-5HL Pneumatic Rubber Wheel / Airless Tire



3.50-5HL

3.50-5HL Rim

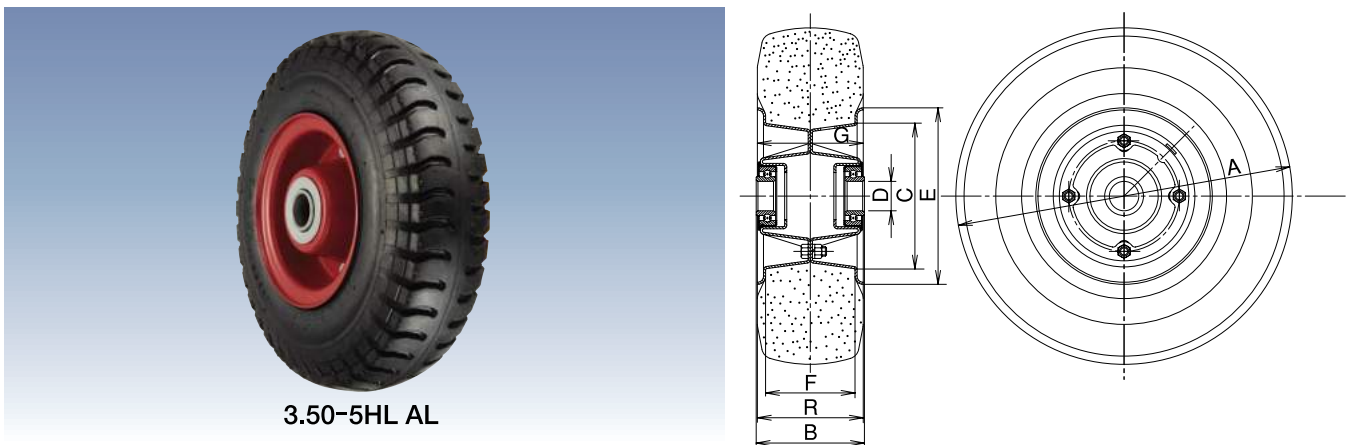
Unit: mm

Model Number	Wheel	Load Capacity		Tire		Rim				Boss Width B	Shaft Diameter D	Standard Air Pressure (kgf/cm ²)	Steel Ball Bearing	Valve	Weight (g)
		(daN)	(kgf)	Diameter A	Width R	Diameter E	Bead Diameter C	Outside Width G	Inside Width F						
3.50-5HL	BS	160	163.2	295	90	149	127	75	62	98	25	3.5	205B	JS87	2,610
	FO			286	90									TR87	2,610

Wheel: BS -- Tire Made by Bridgestone
FO -- Tire Made by an Overseas Maker

Tire: 4PR

The outer diameter and width of a tire were measured at the standard air pressure under the unloaded condition. They may vary according to usage conditions.



3.50-5HL AL

Unit: mm

Model Number	Wheel	Load Capacity		Tire		Rim				Boss Width B	Shaft Diameter D	Standard Air Pressure (kgf/cm ²)	Steel Ball Bearing	Valve	Weight (g)
		(daN)	(kgf)	Diameter A	Width R	Diameter E	Bead Diameter C	Outside Width G	Inside Width F						
3.50-5HL	AL	200	204.0	286	90	150	124	90	76	92	25	—	CBB-2547R	—	5,940

Wheel: AL -- Airless / Solid Tire

The outer diameter and width of a tire were measured under the unloaded condition. They may vary according to usage conditions.