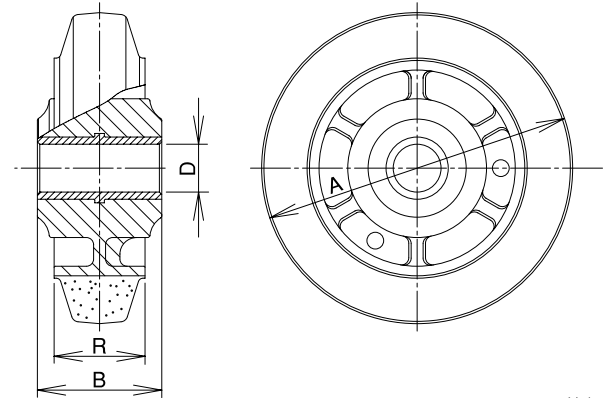


PNA/PNUA_{Type}

Wheel

PNA Type Nylon Rim · Rubber Wheel (Spindle Sleeve)



Unit: mm

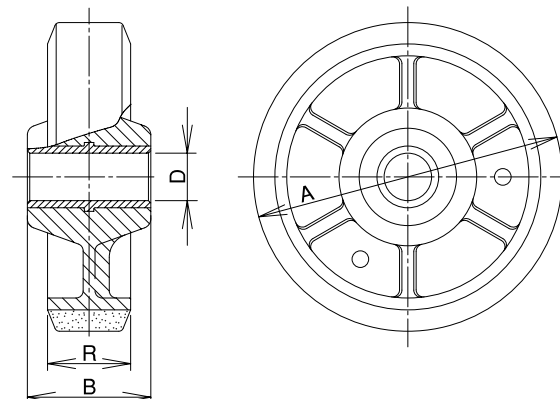
Size 	Model Number	Load Capacity		Boss Width B 	Tire Width R 	Shaft Diameter D 	Bearing	Weight (g) 	Compatible Caster Bracket
		(daN)	(kgf)						
75	PNA-75	70	71.4	39	32	10	Spindle Sleeve	140	J, JA K, KA JB, JAB KBZ, KABZ
100	PNA-100	100	102.0	42	32	12		200	
130	PNA-130	120	122.4	52	38	20		390	
150	PNA-150	140	142.8	55	38	20		510	
200	PNA-200	160	163.2	55	42	20		850	

Wheel Rim: Nylon6

Spindle Sleeve: Nylon66 (Molybdenum combination)

* The wheel with a spindle sleeve may cause trudge, noise, etc. when heavily loaded.
When heavily loaded, we recommend you to use a wheel including bearings (PN / PND Type, Page 86).

PNUA Type Nylon Rim · Urethane Rubber Wheel (Spindle Sleeve)



Unit: mm

Size 	Model Number	Load Capacity		Boss Width B 	Tire Width R 	Shaft Diameter D 	Bearing	Weight (g) 	Compatible Caster Bracket
		(daN)	(kgf)						
75	PNUA-75	70	71.4	39	32	10	Spindle Sleeve	120	J, JA K, KA JB, JAB KBZ, KABZ
100	PNUA-100	100	102.0	42	32	12		180	
130	PNUA-130	120	122.4	52	35	20		330	
150	PNUA-150	150	153.0	55	38	20		440	
200	PNUA-200	250	255.0	55	42	20		720	

Wheel Rim: Nylon6

Spindle Sleeve: Nylon66 (Molybdenum combination)

*The wheel with a spindle sleeve may cause trudge, noise, etc. when heavily loaded.
When heavily loaded, we recommend you to use a wheel including bearings (PNU / PNUD type, Page 87).