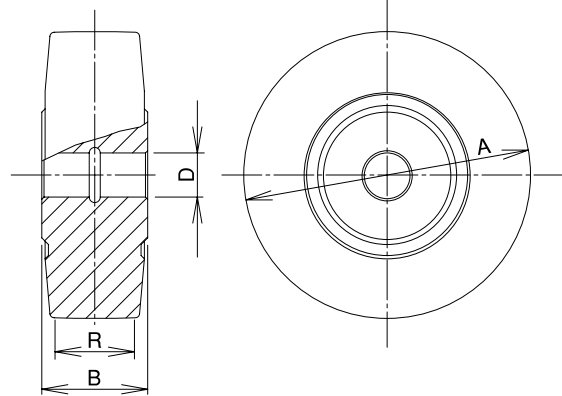
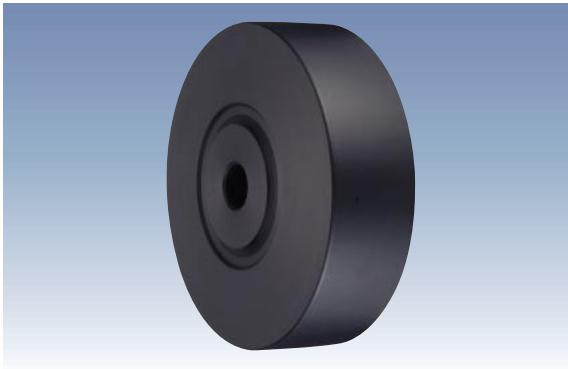


# UWA<sub>Type</sub>

Wheel

## UWA Type MC Nylon Wheel (Spindle Sleeve)



Unit: mm

Size 	Model Number	Load Capacity		Boss Width B 	Tire Width R 	Shaft Diameter D 	Bearing	Weight (g) 	Compatible Caster Bracket
		(daN) 	(kgf) 						
75	UWA-75	360	367.2	34	24	10	Spindle Sleeve	150	J, K, JB, KBZ JA, KA, JAB, KABZ
100	UWA-100	520	530.4	40	29	12		320	
130	UWA-130	890	907.8	48	36	20		650	
150	UWA-150	1,040	1,060.8	52	40	20		940	
200	UWA-200	1,400	1,428.0	54	42	20		1,750	

Monomer Cast Nylon Wheel

Please be careful about the load capacity of the mounting bracket.

\* The wheel with a spindle sleeve may cause trudge, noise, etc. when heavily loaded. When heavily loaded, we recommend you to use a wheel bearings (UWB type, Page 94 / UWBD type, Page 95).