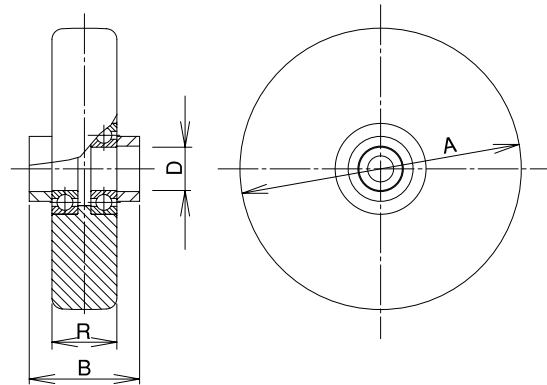
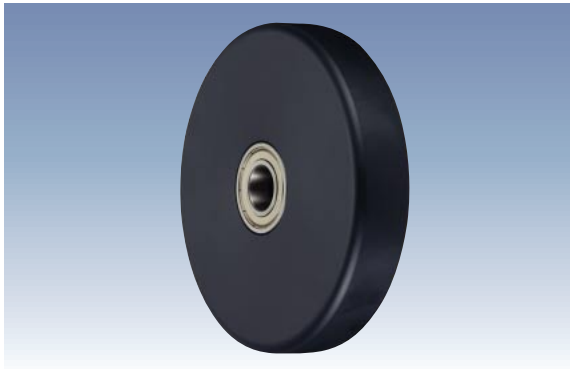


UWBS/UWBSD_{Type}

Wheel

UWBS Type MC Nylon Wheel [Slim Type]



Unit: mm

Size 	Model Number	Load Capacity		Boss Width B 	Tire Width R 	Shaft Diameter D 	Steel Radial Bearing	Weight (g) 	Compatible Caster Bracket
		(daN)	(kgf)						
75	UWBS-75	250	255.0	39	26	10	6200ZZ	170	J, K, JB, KBZ JA, KA, JAB, KABZ
100	UWBS-100	350	357.0	42	30	12	6201ZZ	320	
130	UWBS-130	500	510.0	52	30	20	6004ZZ	540	
150	UWBS-150	600	612.0	55	30	20	6004ZZ	690	
200	UWBS-200 ϕ 20	900	918.0	55	34	20	6204ZZ	1,360	J, K, JB, KBZ JA, KA, JAB, KABZ
	UWBS-200 ϕ 25			71	36	25	6205ZZ	1,490	—
250	UWBS-250	1,000	1,020.0	88	36	25	6205ZZ	2,240	J, K, JB

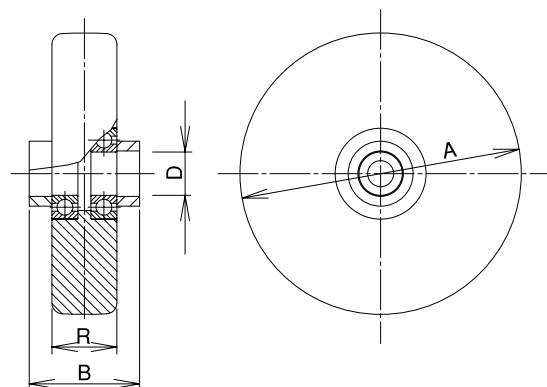
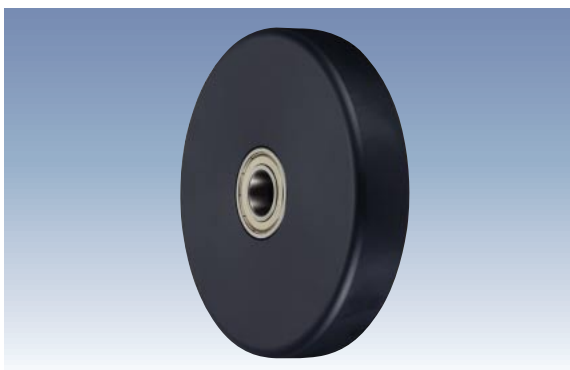
Monomer Cast Nylon Wheel (with MC Nylon Collar)

* Only for UWBS-200 ϕ 25, steel collar is used.

Build-to-order manufacturing

Please be careful about the load capacity of the mounting bracket.

UWBSD Type MC Nylon Wheel [Slim Type] (Including Stainless Steel Bearings)



Unit: mm

Size 	Model Number	Load Capacity		Boss Width B 	Tire Width R 	Shaft Diameter D 	Stainless Steel Radial Bearing	Weight (g) 	Compatible Caster Bracket
		(daN)	(kgf)						
75	UWBSD-75	250	255.0	39	26	10	SUS 6200ZZ	170	J, K, JB, KBZ JA, KA, JAB, KABZ
100	UWBSD-100	350	357.0	42	30	12	SUS 6201ZZ	320	
130	UWBSD-130	500	510.0	52	30	20	SUS 6004ZZ	540	
150	UWBSD-150	600	612.0	55	30	20	SUS 6004ZZ	690	
200	UWBSD-200	900	918.0	55	34	20	SUS 6204ZZ	1,360	

Monomer Cast Nylon Wheel (with MC Nylon Collar)

Please be careful about the load capacity of the mounting bracket.